

**Hungarian University
of Agriculture and
Life Sciences**





➤ **Graduate's Testimonial:**

Tawani Naude (from South-Africa)- SH scholar:

https://www.youtube.com/watch?v=Vdg-MuKg_EA&t=2s



About MATE: <https://youtu.be/RduGnNN20eE>

WHY MATE?

- **MATE brochure:** <https://en.uni-mate.hu/brochure-for-prospective-students>
- **International environment: 1.816 international students from over 100 countries (~14%)**
- **Colourful student life:**
 - Orientation week programmes - <https://youtu.be/kNZH6ZyPNDY>
 - International dinner - <https://www.youtube.com/watch?v=7yeB6zKuL14> , <https://www.youtube.com/watch?v=N5kvmtHJkqg>
 - Culture days - <https://youtu.be/8GCNNT3jl08>
 - SZIA Agroecological Garden
 - Campus tours
 - Talking clubs: Kolping Colours, 'English Corner'
 - MyHungary video contest



WHY MATE? - 2



- **Accommodation in dormitory** – 1st year scholars: priority (application by beginning of August), self-financed students: in Gyöngyös Campus



- **Student services** – mentoring systems, administrative issues, insurance, student counselling or mental health and career



- **Safe and green environment in all campuses:**



Campuses



GEORGIKON CAMPUS



SZENT ISTVÁN CAMPUS



KÁROLY RÓBERT CAMPUS



KAPOSVÁRI CAMPUS

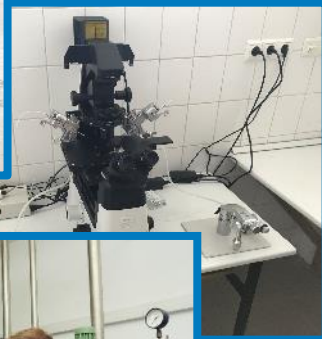


BUDAI CAMPUS



Bachelor Programmes (~7 semesters):

- Agricultural Engineering
- Environmental Engineering
- Horticultural Engineering
- Wildlife Management Engineering
- Business Administration and Management
- Mechanical Engineering
- Tourism and Catering (8 semesters)
- Food Engineering
- Landscape Management and Garden Construction Engineering
- Film and Media (6 semesters)



Curricula to check here: <https://ed.uni-mate.hu/academic-year-202425>

Master's Programmes (4 semesters):

- Mechanical Engineering
- Engineering Management
- **Biosystems Engineering (3 semesters! - NEW)**
- Environmental Engineering
- **Ecotoxicology (NEW)**
- Agricultural Water Management Engineering
- Crop Production Engineering
- Agricultural Biotechnology (Plant and Animal)
- Wildlife Management Engineering
- Rural Development Engineering
- Management and Leadership
- Supply Chain Management
- Tourism Management
- Business Development
- Horticultural Engineering
- Food Science and Technology Engineering
- Food Safety and Quality Engineering
- Landscape Architecture and Garden Design
- **Viticulture and Oenology Engineering (NEW)**
- Plant Protection
- Business Development
- Animal Nutrition and Feed Safety
- Photography



Gödöllő Campus:

Doctoral School of Animal Biotechnology and Animal Science

Doctoral School of Biological Sciences

Doctoral School of Environmental Sciences

Doctoral School of Plant Sciences

Doctoral School of Economic and Regional Sciences

Doctoral School of Mechanical Engineering

Buda Campus:

Doctoral School of Landscape Architecture and Landscape Ecology

Doctoral School of Food Sciences

Doctoral School of Horticultural Sciences

Kaposvár Campus:

Doctoral School of Animal Science

Doctoral School of Economic and Regional Sciences

Georgikon Campus:

Festetics Doctoral School



Doctoral schools: <https://en.uni-mate.hu/doctoral-schools>, study period: 8 semesters (4 years)

➤ Required documents (BSc/MSc/PhD):

- Online application form (! personal data ! – SPELLING!)
- **Motivation letter** (1 or 2?) - *Why are you a suitable candidate?, letter format*
- **Secondary school certificate / Bachelor degree / Master degree (MD)**
- Transcript of records (! in case of ongoing studies)
- **Proof of English language proficiency (B2 level) - (MD)**
- **Passport (MD)**
- **PhD:** research proposal, 2 recommendation letters, *Statement of the Supervisor (by 15 March - 3 PhD schools!)*
- **Portfolio:** *Landscape Architecture and Garden Design*
Film and Media, Photography: Applicants can attach material in any format as part of their portfolio, be it a short film, a photo series, video, PDF summary or anything that adds value and represents the level of the artist. The point is to gain insight into his/her art.
- **Medical certificate (only for nominated applicants) - by 15 April**

MD= missing documents (deadline: 1 August, BUT better before the entrance exam)

➤ Selection process:

- **STEP 1** – nomination (criteria differ from one country to another): complete application package is the best (middle of Jan – end of Feb) - **MISP!**
- **STEP 2** – entrance exam (middle of March – end of May)
- **STEP 3** – **final decision (end of June)** by the Board of Trustees of Tempus Public Foundation (importance of priorities: 1st choice study programme matters!)
- **Factors considered:** your ranking position on the list of nominees + result of entrance exam (0-100 scale) + quotas (country/study programme)

➤ Entrance exam/interview (info and invitation via email):

- **BSc level:** based on the assessment of the uploaded documents (if necessary, oral interview)
- **MSc level:** credit recognition procedure (60 relevant credits) + oral interview (**motivation**, language skills)
- **PhD level:** oral interview (motivation, language skills + **research topic, scientific background**, publications, presentations at conferences etc.)

Platform: Teams / Zoom / DreamApply recorded interview

Doctoral studies:

- At MATE, 3 doctoral schools consider the ***Statement of the Supervisor*** document **compulsory to be uploaded by 15 March:**

- Festetics Doctoral School
- Doctoral School of Food Sciences
- Doctoral School of Landscape Architecture and Landscape Ecology

In the lack of this document, your application will be formally rejected, no entrance exam either.

- For research topics and potential supervisors, please check this webpage: <https://doktori.hu/index.php?menuid=115&lang=EN> (official website of all doctoral schools in Hungary)
Select a topic (check the last few years as well), and contact the professor directly.
- You can also contact the scientific secretary or the international coordinator of the respective doctoral school: <https://en.uni-mate.hu/doctoral-schools>.

Call for Application and Annexes

Application Timeline:

- 10 January: deadline for submitting applications
- 15 February: technical check
- 30 April: deadline for submitting medical certificate
- from 15th June: decision by Minister responsible for Higher Education
- from 1 July: notification about selection result
- accept offer online 😊
- 31 July: upload missing documents
- July-August: visa application process
- 1 September: arrival in Hungary

Approved recommendation to upload to your application:

Recommendation of the local Christian Church,
following the formal criteria given in the Call for Application



Application Process

To successfully apply for [study programs](#) at MATE complete the following steps:

- APPLICATION FORM
- Letter of motivation
- Reference forms/recommendation letters from two referees
- BSc applicants: secondary school final examination
- MSc applicants: BSc degree certificate and transcripts.
- Proof of B2 level of English
- Curriculum Vitae
- Medical certificate
- Payment Confirmation of 100 EUR Application Fee/application. Maximum 3 applications per applicant



Deadline: 31 May 2025

Selection Process - After submitting the Application Package

Revision of
Application

Interview

PLoA

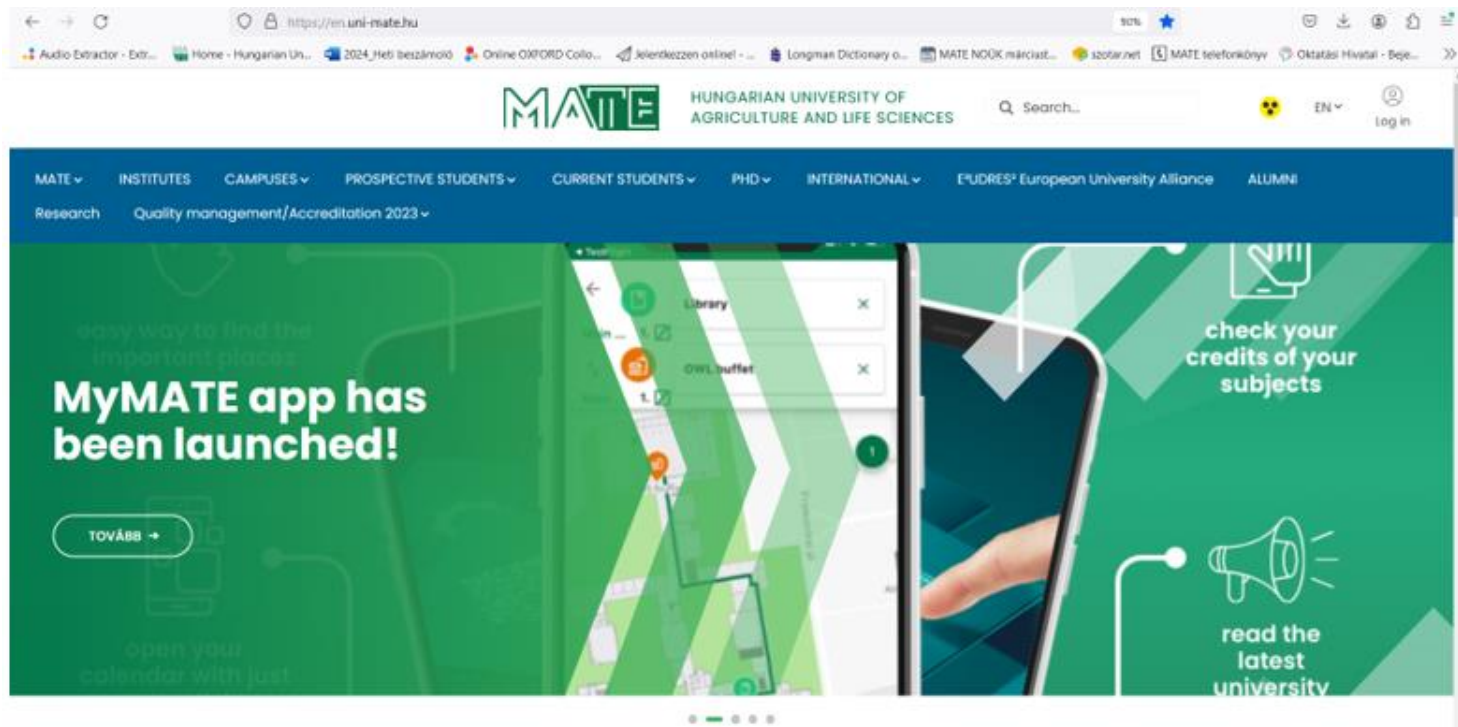
Tuition
Fee (1 year!)

LoA
Welcome Info

Arrival
From 1 September

Detailed info: <https://en.uni-mate.hu/en/application-procedure-for-bsc-msc>

- **MATE website:** <https://en.uni-mate.hu/> (alumni network, career services, mental health, academic calendar)
- **MATE brochure:** <https://en.uni-mate.hu/brochure-for-prospective-students>
- **MyMATE app for MATE students:** <https://en.uni-mate.hu/en/h%C3%ADr/-/content-viewer/mymate-app-has-been-launched-/20123>



- **Language certificate requirements:** B2 level of English is required (*i.e. TOEFL min. of 500 on PBT, 61 on iBT; a 6.0 on IELTS, EUROEXAM or equivalent accredited language exams, including completion of previous level of studies in English e.g. GCSE or BSc*) - Please, note that **we do not accept DUOLINGO (DET) or EF SET test** as a proof of English proficiency
 - ✓ Acceptable language certificates: <https://en.uni-mate.hu/application-procedure-for-bsc-msc>
 - **Refund policy** in case of visa rejection
 - Application fee (100 EUR) - 1 study programme (max. 3) - non-refundable
 - **Family unification:** neither SH nor MATE is involved in the procedure.
- Financial background, health insurance and accommodation** are the responsibility of the family. No accommodation can be provided in the dorm for children.
- **Living in Hungary / costs** – 600-800 EUR/month, dormitory: 120 EUR/month, cost of renting a flat in Budapest: from 250 EUR/month

Working as a student: max. 30 hours/week

Residency after graduation

Webpage of the Immigration Office: <http://oif.gov.hu/index.php?lang=en>

Options:

Residence permit **for job seeking and entrepreneurship**

>> registration as a job seeker is necessary

Apostille procedure: <https://konzinfo.mfa.gov.hu/en/legalisation-procedure-documents-be-used-abroad>

Keep in touch!

Check our [website](#) and [FB page](#) regularly:

<https://en.uni-mate.hu/>

<https://www.facebook.com/sziuinternational>

Next virtual open day: 20th March 2025, 2 pm (CET)

Contact us:

SH – sh@uni-mate.hu

SCYP – scyp@uni-mate.hu

Self-financed – admission@uni-mate.hu

Thank you for your kind attention!



MATE

MAGYAR AGRÁR- ÉS
ÉLETTUDOMÁNYI EGYETEM

www.en.uni-mate.hu